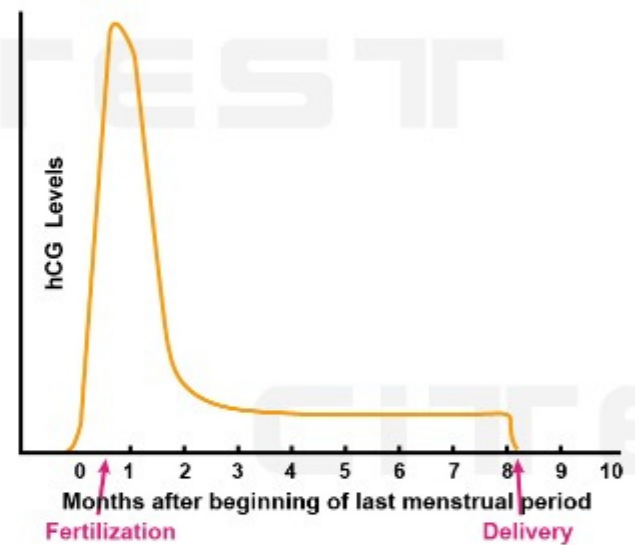


hCG Pregnancy Rapid Tests

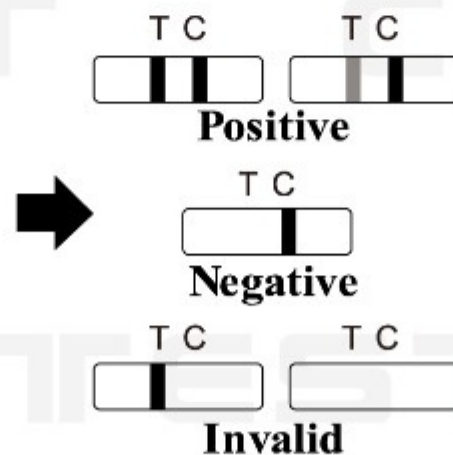
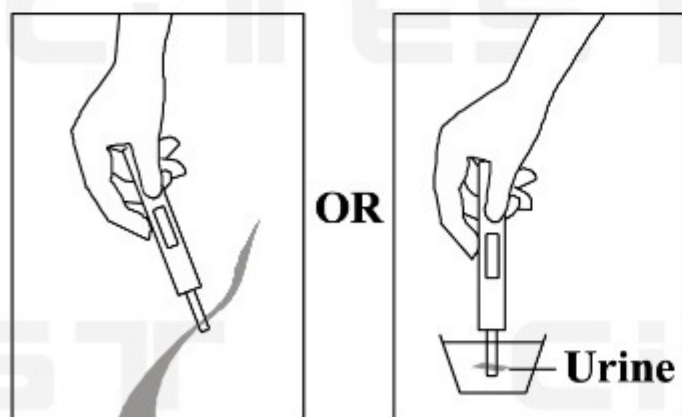
Celebrating the Womanhood in Pregnancy Testing



- ◆ Early pregnancy testing, in general, is based on the detection or measurement of hCG.
- ◆ hCG can be detected in both urine and serum or plasma as early as 7 to 10 days after conception.
- ◆ The appearance of hCG in both the urine and serum or plasma soon after conception, and its subsequent rapid rise in concentration during early gestational growth, make it an excellent marker for the early detection of pregnancy.
- ◆ Most of the pregnancy tests are based on use of urine as specimen of choice due to its easy availability and non-invasive nature with sensitivity ranging from 10 mIU/ml to 50 mIU/ml.



Convenient Procedure



- Fast Results in 3 Minutes
- Simple Procedure
- High Accuracy: >99.9%

Ordering Information

Cat. No.	Product Description	Specimen	Format	Cut-Off	Pack	CE Status
FHC-202	Pregnancy (hCG) Rapid Test	Urine	Midstream	25 mIU/mL	No Box	CE